



Useful Information

Directions

By public transport:

Take the train to Murnau or Kochel, then RVO bus route 9611 to the stop "Freilichtmuseum Glentleiten" (April – October). Admission charge discount with Bayern or Werdenfels ticket.

By car:

A95 exit Murnau/Kochel after Großweil. Just 40 minutes south of Munich.

Opening hours

From St. Joseph's Day to Martinmas (19 March – 11 November), Tuesday to Sunday from 9.00am to 6.00pm; also open on Mondays on public holidays and from the beginning of June until the end of September. The museum closes at 5.00pm after time change in October.

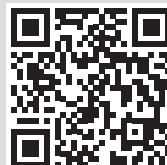
Admission charge

- Adults: EUR 7
- Family ticket: EUR 14
- Children under 6: Free admission
- Children/young people (6-15 years old): EUR 2
- Pupils (16-18 years old), students, trainees, volunteers (BFD, FSJ, FÖJ), people with severe disabilities: EUR 4
- Groups (20 people or more): EUR 5 per person
- School groups: EUR 2 per pupil

Address and contact details

Freilichtmuseum Glentleiten des Bezirks Oberbayern
An der Glentleiten 4, 82439 Großweil
Phone: +49 (0)8851/185-0
freilichtmuseum@glentleiten.de
www.glentleiten.de

We are looking forward to your pictures on Facebook and Instagram: **#Glentleiten**



Time Travelling at the Glentleiten!



Freilichtmuseum
Glentleiten



Upper
Bavaria
in a
nutshell!

Welcome to the Cultural and Natural Wonders of the Glentleiten Open Air Museum!

Spend an exciting day in fascinating surroundings at southern Bavaria's largest open air museum, where more than 60 buildings are preserved in their original, furnished state. They have been rebuilt in a cultural landscape maintained according to historical standards.

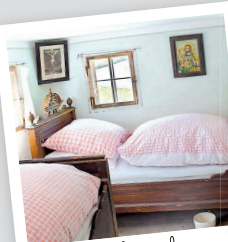
Gain a comprehensive insight into Upper Bavarian life from the early modern age right up to the present. You will find gardens, forests and meadows with old animal breeds and enjoy spectacular mountain and lake views on a site covering 40 hectares.



Hi there!



historical buildings



original furnishings



bountiful fruit crop



craft presentation

Come on in – Get ready for New Discoveries!

Welcome to the new **entrance building at the Glentleiten**. Besides the **pay desk** you will find an inviting **gift shop** with an excellent variety of unique products. A hall for changing displays is providing **special exhibitions** about Upper Bavarian history, country-specific traditions, fascinating objects and topics.



A **show brewery** is part of the modern foyer, where we are brewing delicious, tasty Bavarian beer on a regular basis in front of you. Try it in the **Glentleitner Wirtschaft & Brauerei** with a big panorama terrace or purchase it at the museum store. Don't miss our beer seminars and tastings!

Free WIFI for visitors is provided on the ground floor of the entrance building.





For Explorers and Sherlocks of All Ages

Dizzying rides and exciting detective stories, textile printing, pottery-making, woodturning or charcoal-burning for children – here at the Glentleiten Open Air Museum is *always* something to discover, stories to tell, work to do and laughter to be shared. During the school *holidays* we additionally offer special programs.

Children of all ages are invited to travel through time and crack a secret code in our “*house of discovery*”, where only those who use all their senses are able to solve the exciting mystery. There are activities for families to join in with *every Saturday*, free of charge.



the mysterious safe



time trip at the Mirzn



action at the Wagnerhäusl



60 m of marble run

At the “*Wagnerhäusl*” our little visitors can actively get to know the profession of wagon-maker through play.

A *marble-run of over 60 m* winds through the forest down into the mill valley. Expect lots of fun and fascination when the marbles run over various action elements like carillon or spinning tops.

Activities, Tours and Programs for Everyone

The Glentleiten Open Air Museum is ideally suited for **group excursions** for clubs and businesses, schools and nurseries.

We offer hands-on **activity programs** and **tours** with various focal points, such as nutrition and storing supplies without supermarkets or fridges, from flax cultivation to finished linen, light 100 years ago or the journey from grain to bread are all just some of the exciting subjects on offer.



fresh crop

The over 140-year-old **skittle alley** provides sporting enjoyment, with the skittles still arranged by hand. You can quench your thirst right next door in our beer garden “Am Salettl”.

Did you know?

The Glentleiten Open Air Museum was awarded with the signet “Bayern barrierefrei – wir sind dabei” by the Bavarian State Government. This is an acknowledgment for specific efforts to turn the museum more barrier-low.



Bayern barrierefrei

Wir sind dabei



baking



using all senses



from flax to linen





A Fiery Passion for Traditional Crafts

Have you ever seen what a cooper is producing, have you smelled the flavor of bread freshly baked in a wood-fired stove? Do you know how a blacksmith heats the iron until it glows red or how a jar is produced at a potters-wheel? In the pottery you can buy

handcrafted ceramic ware or even try to make pottery yourself. Old crafts are revived during our **daily demonstrations!** Almost forgotten traditional professions and skills are shown in our historic buildings by up to 30 specialists.



turning



the mill valley



at the spinning wheel



making pottery



a rope is produced



wagon-maker at work

Entertaining, Enjoyable and Relaxing Breaks

Looking, marvelling and trying out makes hungry and whets the appetite for unwinding!

The spacious grounds of the open air museum are home to a number of *pretty locations* where you can relax and enjoy your packed lunch. Along with tables and seating by the houses and alpine dairies and on the waysides, there are covered areas with views for miles around: an invitation to enjoy a short rest!



The *Glentleitner Wirtschaft & Brauerei* with its big panorama terrace is located on the second floor of the new entrance building, opened in 2018. Enjoy Bavarian food like hearty “Tellerfleisch”, “Kasspatzen” and the in-house Glentleitner beer, brewed in copper kettles directly in the restaurant.



The *Kramerladen* invokes the atmosphere of an old-fashioned country-store, where you can purchase nice or useful items but also warm or cold meals, drinks, coffee, cakes and try some wonderfully refreshing organic ice cream.



Enjoy breath-taking views of the Kochelsee and the surrounding peaks of Herzogstand, Benediktenwand, Heimgarten and Jochberg in the *Biergarten am Salettl* – and of course regional specialties such as “Obatzda”, “Weißwurst” and “Leberkas” as well as coffee and cakes.



The Glentleiten Open Air Museum – an Overview

The picturesque site, covering about 40 hectares in the middle of the foothills of the Bavarian Alps, offering wide views, historic buildings, craft shops, gardens and animals.



Concept and Design: k13design.de

Picture credits: Bezirk Oberbayern, Archiv FLM
Glentleiten: Bäck, Ehn, Gerard, Koop, Krieter,
Nixdorf, Schels, Tunger
Climate-neutral printed on 100% recycled paper